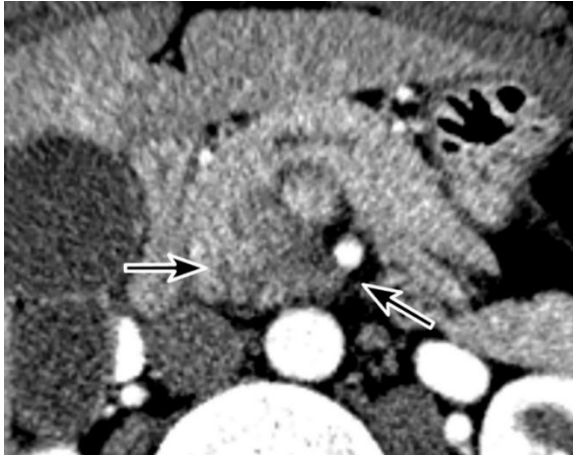


(A)



(B)



S2 Fig. Computed tomography (CT) images at baseline (A) and before resection (B) of a 48-year-old male at low-risk according to post-neoadjuvant response criteria. The late arterial phase transverse CT images at baseline (A) and before resection (B) show the mass (arrows) in the pancreatic head. After neoadjuvant therapy, the tumor decreased in size particularly in the posterior aspect (arrowhead). Serum carbohydrate antigen 19-9 level normalized from 92.8 to 8.1 U/mL. The patient survived 60.0 months after the diagnosis and 56.0 months after the surgery. He was at ypT1N0M0, stage IA.