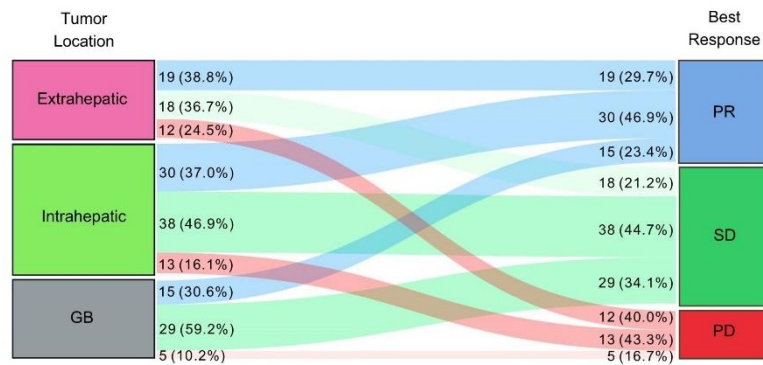
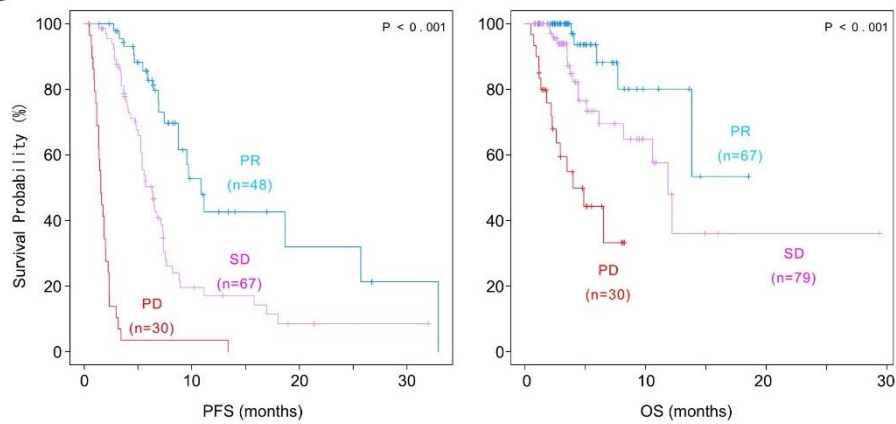


A



B



S4 Fig. Clinical outcomes of BTC based on the anatomic location. (A) Sankey diagram showing the response after first-line chemotherapy based on the anatomic location. The percentage adjacent to the color box indicates the number of patients with a percentage corresponding to each subgroup. (B) Kaplan-Meier plot for survival outcomes according to best response after first-line gem/cis-based chemotherapy. p-value was estimated using the log-rank test. BTC, biliary tract cancer; CR, complete response; OS, overall survival; PD, progressive disease; PFS, progression-free survival; PR, partial response; SD, stable disease.