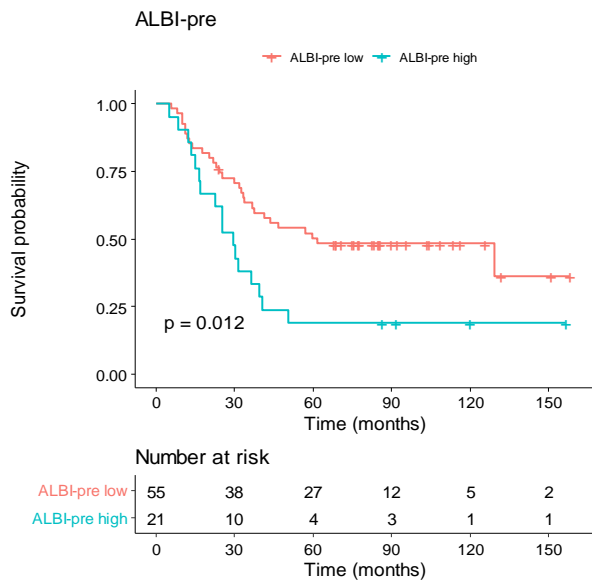
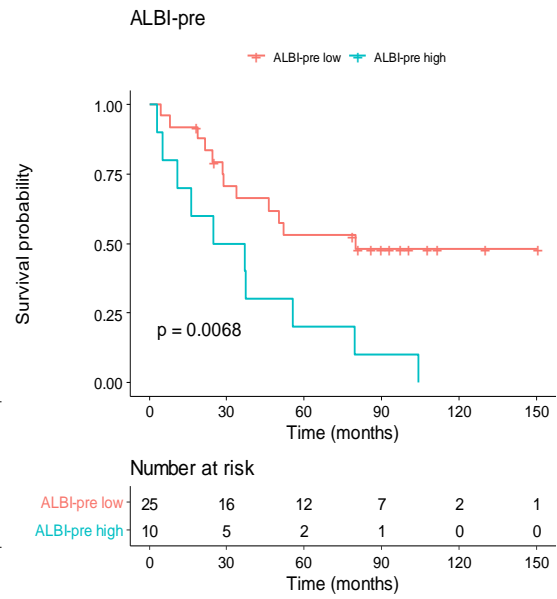


(A)



(B)



S8 Fig. Kaplan-Meier survival curve of overall survival between ALBI-pre according to the liver metastasis in stage IV patients. The liver metastasis group was defined to include patients with only liver metastasis and patients with both liver metastasis and other organ metastases. (A) Stage IV with liver metastasis patients (n=76). (B) Stage IV without liver metastasis (n=35). ALBI, albumin-bilirubin.