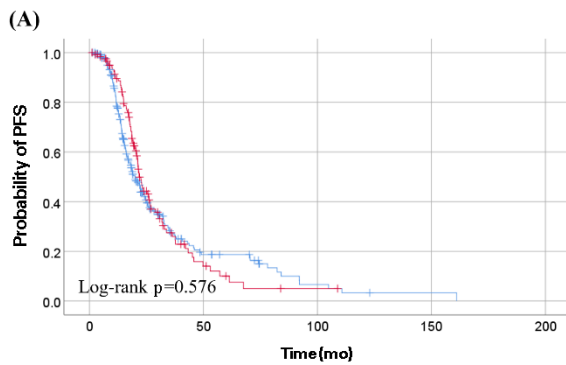
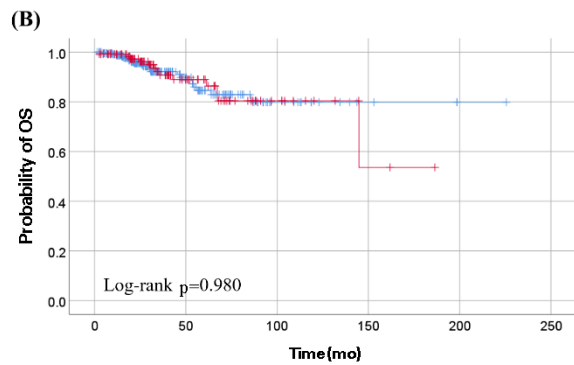


## High-grade serous carcinoma

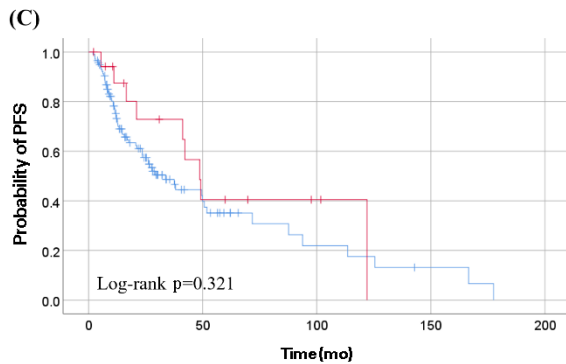


<i>BRCA1/2</i> status	No.	Events	Median (mo)	95% CI
Wild-type	246	164	19.9	17.0–22.9
Mutation	122	83	21.8	19.6–24.0

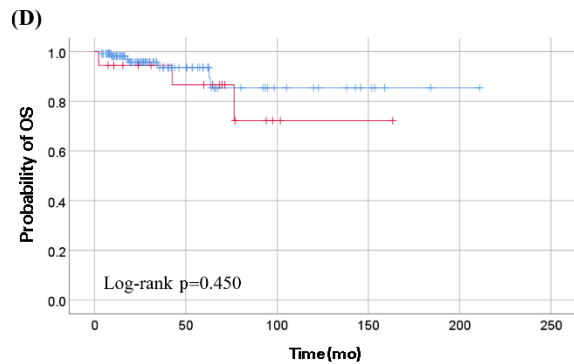


<i>BRCA1/2</i> status	No.	Events	5-Year survival rate (%)
Wild-type	246	22	84.6
Mutation	122	13	89.0

## Non-high grade serous carcinoma



<i>BRCA1/2</i> status	No.	Events	Median (mo)	95% CI
Wild-type	116	62	33.8	22.7–44.8
Mutation	18	9	48.7	37.1–60.3



<i>BRCA1/2</i> status	No.	Events	5-Year survival rate (%)
Wild-type	116	7	93.5
Mutation	18	3	86.6

**S5 Fig.** Survival outcomes of patients according to histologic type; high-grade serous carcinoma (A, B) and non-high-grade serous carcinoma (C, D). (A, C) Progression-free survival (PFS). (B, D) Overall survival (OS).